



BC&C

COLLECTION

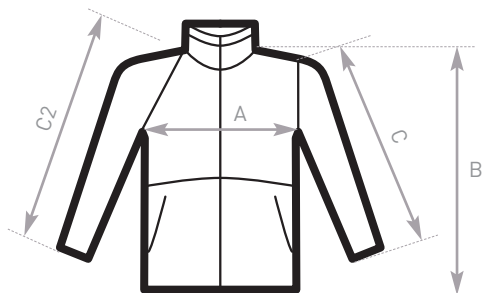
sizes specifications

Outdoor fleeces 2009

CATIONS BC&C 2009 SIZES SPECIFICATIONS BC&C 2009 SIZES SPECIFICATIONS BC&C

engineered style

THE RAW RANGE



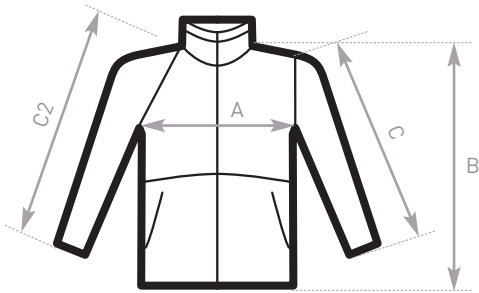
C2= RAGLAN SLEEVE

SIZES

engineered style	XS	S	M	L	XL	XXL	XXXL
B&C WindProtek →FU 749							
A HALF CHEST	51	54	57	60	63	66	69
B BODY LENGTH	67,5	69	70,5	72	73,5	75	76,5
C SLEEVE LENGTH	60	61	62	63	64	65	66
B&C Horizon /women →FW 750							
A HALF CHEST	45	47,5	50	52,5	55	57,5	
B BODY LENGTH	59	60	61	62	67	69	
C2 SLEEVE LENGTH	71	72	73	74	75	76	
B&C Cliff Climber →FU 715							
A HALF CHEST	49	52	55	58	61	64	67
B BODY LENGTH	67	68,5	70	71,5	73	74,5	76
C2 SLEEVE LENGTH	75	76,5	78	79,5	81	82,5	84
raw range							
B&C Icewalker+ →FU 703							
A HALF CHEST	50	53	56	59	62	65	68
B BODY LENGTH	68	69,5	71	72,5	74	75,5	77
C SLEEVE LENGTH	61,5	62,5	63,5	64,5	65,5	66,5	67,5
B&C Highlander+ →FU 704							
A HALF CHEST	50	53	56	59	62	65	68
B BODY LENGTH	68	69,5	71	72,5	74	75,5	77
C SLEEVE LENGTH	61,5	62,5	63,5	64,5	65,5	66,5	67,5
B&C Traveller+ →FU 705							
A HALF CHEST	50	53	56	59	62	65	68
B BODY LENGTH	66	67,5	69	70,5	72	73,5	75

engineered style
THE RAW RANGE

fleece Kids



C2= RAGLAN SLEEVE

SIZES

Kids	5/6	7/8	9/11	12/14
B&C Cloud /kids				
→ FK 790				
A HALF CHEST	41	44	48	52
B BODY LENGTH	48	52	57	62
C SLEEVE LENGTH	40	43	46	49

fleece Kids